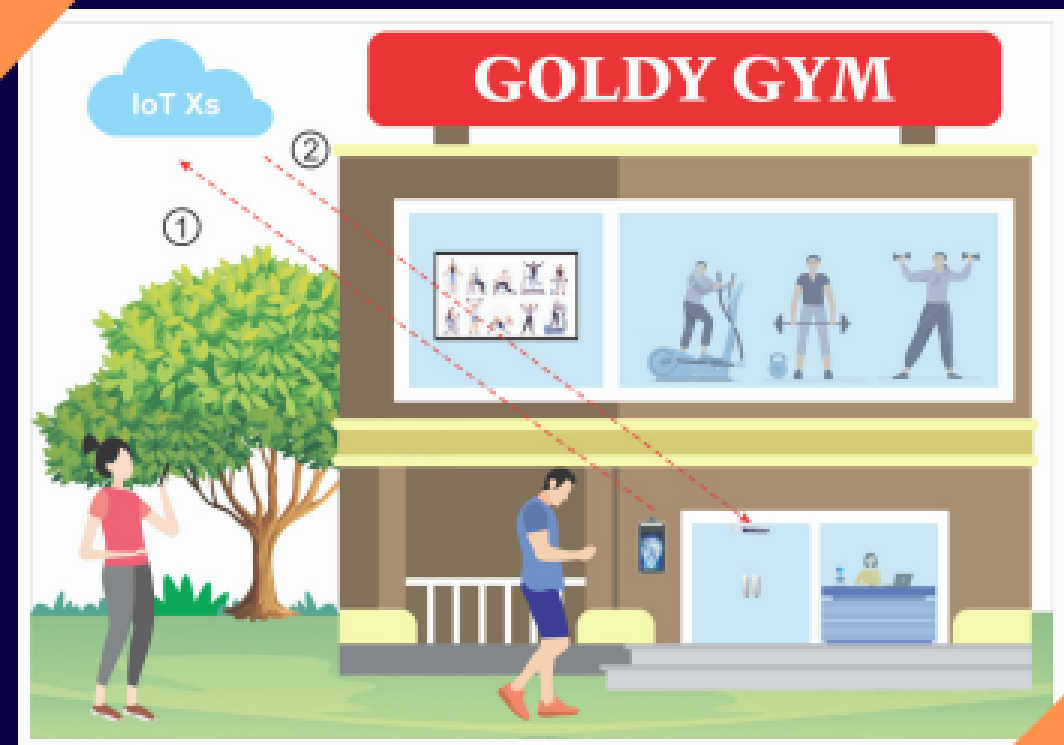


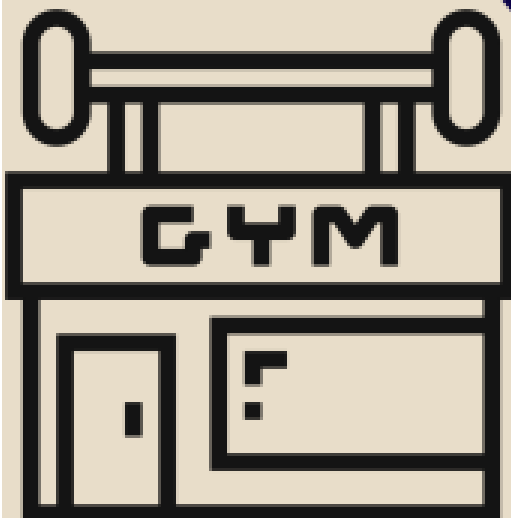
GYMS IN MULTIPLE LOCATIONS

- Customers pay for and subscribe to Gym memberships as per their requirements.
- If gyms have branches in multiple cities and allow customers to avail their services in any city
- Memberships may also be given to customers based on time slots
- Gyms may have dedicated hours for women only.
- The period to which each customer should be provided access differs based on the kind of pack they have paid for.
- Such subscription & payments are managed by the Companies running the facility, in their own system.



End User Experience

- Members of the gym get their face enrolled using a photo.
- The Face data related to the customers membership will be passed on to Fortuna's Face Device on MQTT protocol to onboard the member to manage the usage (like Access to other city gyms, etc).
- When a member walks towards a gate, the Face machine does a liveness/spoof detection, and identifies the Member with ID.
- The ID is posted to Fortuna Broker on Cloud. The Gym Company Software subscribes to this & get the ID number for validation.
- It Grants/Denies access based on the information mapped to his profile. If a member's subscription is not paid for, it may prohibit the access.
- This may be extended at will, to manage member access in an automated manner. The access control system panels will work with the gym management software as a single system.





CLUBS WITH MULTIPLE FACILITY MANAGEMENT

People may take subscriptions for clubs may be based on the following:

- Monthly or Half yearly scheme
- Type of facility to be availed
- Preferred time for doing the activity
- Facility in only one city or in multiple cities (in partner clubs)

- Face based machines or QR Code readers are installed, at suitable entrances to manage & control the Access.
- When the customer takes the subscription for the club, his face is captured as part of the onboarding process for the member.
- The data related to the customers membership details will be passed on to Fortuna's Access Control System through exposed APIs to manage the usage (like Validity, Facility, Access to other associate clubs).
- Each Access attempt is pushed to IoT XS Cloud, for online validation, and the user is allowed or denied Access based on current status. There is no need to download/manage the Data or complex logic at the local level.



**End User
Experience**