



Super smart landscape design based AI face recognition device with biometric reader option

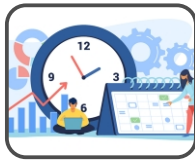


**VF400**  
AI Face  
Recognition



**VF400X**  
AI Face Recognition  
and Fingerprint

Use Cases



Time and Attendance  
Management on premise



Access Control



Cloud based  
attendance

**VF400**

A sleek, reliable, and stunning AI based Face Recognition Attendance and Access Control terminal for medium size organizations

### Features



#### High user capacity

- 1000 Face Capacity upgradable to 5000 users
- 1000 Finger Capacity (for VF400X)
- 1,00,000 user log storage



#### Ultra fast and accurate face recognition

- Recognizes faces in less than 0.3 seconds
- Works from 0.1-20,000 Lux
- Highly accurate: more than 99% Accuracy
- Works from 0.3-2 meters



#### Powerful internal chipset

- Extremely fast double core 1 GHz chipset
- Built in EM Prox reader
- 2 MP Dual Camera
- 8 GB Flash storage
- Large 4.5 inch touchscreen



#### Multi factor authentication

- Face only
- Card and face
- Card or face
- Face and PIN



#### Multiple modes of connectivity

- LAN port with TCP/IP Ready
- Built-in WiFi
- Built-in USB
- 4G Optional with SIM card slot inside



#### Access Control ready

- Wiegand output support
- Relay
- Exit button support
- Compatible with 26/34 bit Access Control panel

### Suitable for



Indoor office setups



Hospitals



Stores and showrooms



Hotels

### Specification

Security Photo	1,00,000
Mask Detection	Yes
Attendance	Interval, Work Status, Work Code
Operating System	Linux
Screen	Industry 4.5 inch Touch Screen
Sensor	2M Dual Camera
Storage	EMMC FLASH 8Gbytes
Work Environment	(-)10°C ~ (+)50°C, RH <95%
Certification	RoHS, FCC, CE
Application Area	Indoor
Power	DC 12V 2A
Dimension	140*20*135.5 mm
Weight	0.68 Kg

### Communication Platform Software & API's

- **Smart Face** : Web Based Communication Server for Face & Finger Terminal, Template & Data Management with Push Technology

### T & A Application Software

- **Smart Face Attendance** : Web based Platform Software with Built-in Attendance Management, Leave & OT Module
- **timely.bio** : A powerful cloud-based attendance solution combining AI-driven biometric devices and a smart app to streamline attendance management for startups and MSMEs
- **OTG HR** : An all-in-one cloud based workforce management solution streamlining attendance, task management, and HR operations for businesses of all sizes
- **TPP Nuo** : Desktop Based communication & MIS Software with Push Technology upto 200 Users

### Ordering Information

- **VF400** : Face Attendance reader with 4.5" screen size with 1000 Face users
- **VF400X** : Face & Finger Attendance reader with 4.5" screen size & 5000 Face users
- Optionals
  - **OPT 06** : Built in 4G Interface