

Accessories



Turnstile Mounting Stand

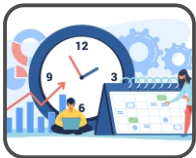


SS Panel for Protection



Printer for Canteen

Use Cases



Time and Attendance Management



Access Control System



Cloud based Attendance



Amenity Booking Management



Canteen Token Management

**VF1000**

AI based 7" Industrial grade Attendance & Access control Terminal with Mask & Body Temperature detection & Logging\*

### Features



#### High user capacity

- Standard 10,000 Face (1:N), upgradable to 25,000 Face (1:N), 50,000 Face
- 1500 Palm User\* (Model : VF1000P)
- 2,00,000 user log storage



#### Ultra fast and accurate face recognition

- Recognizes faces in less than 0.3 seconds
- Works from 0.1-30,000 Lux
- Highly accurate: more than 99% Accuracy
- Works from 0.3-2 meters



#### Powerful internal chipset

- Extremely fast double core 1 GHz chipset
- EM Prox or MIFARE Reader or HID Reader\*
- 2 MP Dual Camera with 1080P/30fps
- EMMC FLASH 8Gbytes, 16GB TF storage
- 7 inch Touchscreen display



#### Multi factor authentication

- Face only
- ID and PIN
- Card and face (if Card reader\* opted for)
- Card or face (if Card reader\* opted for)



#### Multiple modes of connectivity

- LAN port with TCP/IP with Push Technology
- Built-in WiFi
- Built-in USB
- 4G interface with SIM card slot\*



#### Access Control ready

- Wiegand output support
- 2 Relay output
- Exit button support input
- Door sensor support input

### Specification

Security Photo	2,00,000
Mask Detection	Yes
Attendance	Interval, Work Status, Work Code
Operating System	Linux
Communication	TCP/IP with Push Tech.,MQTT, HTTP supports
Screen	Industry 7 inch Touch Screen
Sensor	2 MP Dual Camera with 1080P/30fps
Card Reader*	Yes
Work Environment	(-) $10^{\circ}\text{C}$ ~ (+) $50^{\circ}\text{C}$ , RH <95%
Access Control	26/34 bit Wiegand output
Certification	RoHS, FCC, CE
Application Area	Indoor / Semi Outdoor
Printer Interface*	Thermal printer for Canteen module
Temp. Detection*	Range: $33^{\circ}\text{C}$ ~ $42^{\circ}\text{C}$ , Accuracy: $\pm$ / $-0.3^{\circ}\text{C}$
Power	DC 12V 2A
Dimension	116*25*222 mm
Weight	0.44 Kg

#### Communication Platform Software & API's

- **Smart Face** : Web Based Communication Server for Face & Finger Terminal, Template & Data Management with Push Technology
- **PM Neo** : API integration project with HRMS/Payroll/ERP software for Employee Master, Templates, Terminal & Transaction data

#### Application Software

- **Smart Face Attendance** : Web based Platform Software with Built-in Attendance Management, Leave & OT Module
- **OTG HR** : Cloud based Attendance System(including Mobile App) with Intra-office Task Management Solution
- **TPP Nuo** : Desktop Based communication & MIS Software for Attendance with Push Technology upto 200 Users
- **MyGate** : Society Management App

#### Ordering Information

- **VF 1000** : 7" Wall mounting Device
- **VF 1000P** : 7" Wall mounting Device with Palm

#### Optionals

- **OPT 02S** : Built in Mifare Reader
- **OPT 02P** : Built in EM Proximity Reader
- **OPT 02HP** : Built in HID Reader
- **OPT 03-25K** : Upgrade to 25,000 Face users
- **OPT 03-50K** : Upgrade to 50,000 Face users
- **OPT 06** : Built in 4G Interface
- **OPT 11** : Battery Back-up (2Hrs) for VF1000
- **OPT 12** : Panel for Vf1000
- **OPT 13** : 7" Turnstile mounting
- **OPT 14** : Temp. Sensor for VF1000

\*Optional